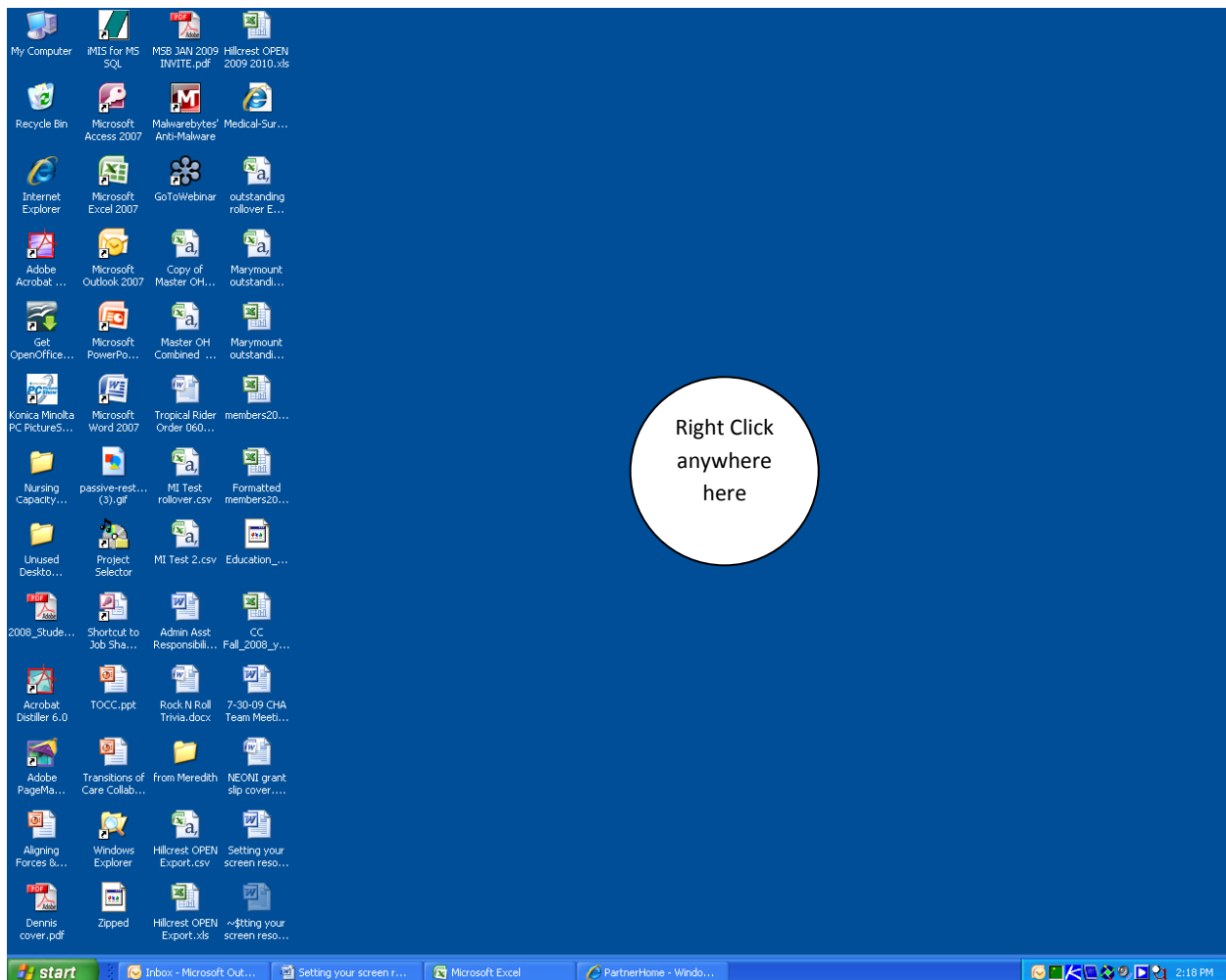




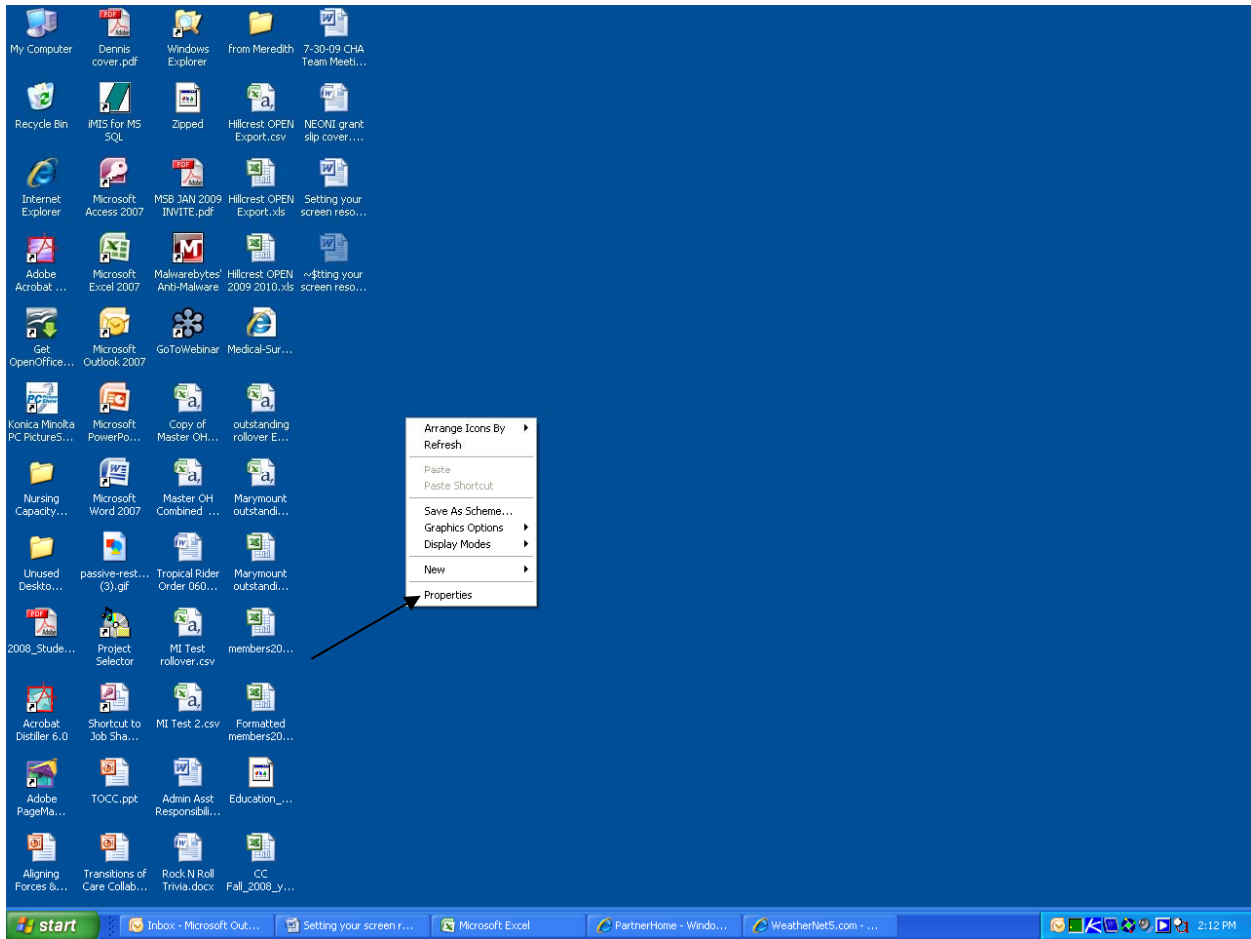
## Screen Resolution Adjustment Options for StudentMAX™

If you are unable to view the entire placement table from left to right while accessing StudentMAX™, try adjusting your screen resolution. Follow these simple steps:

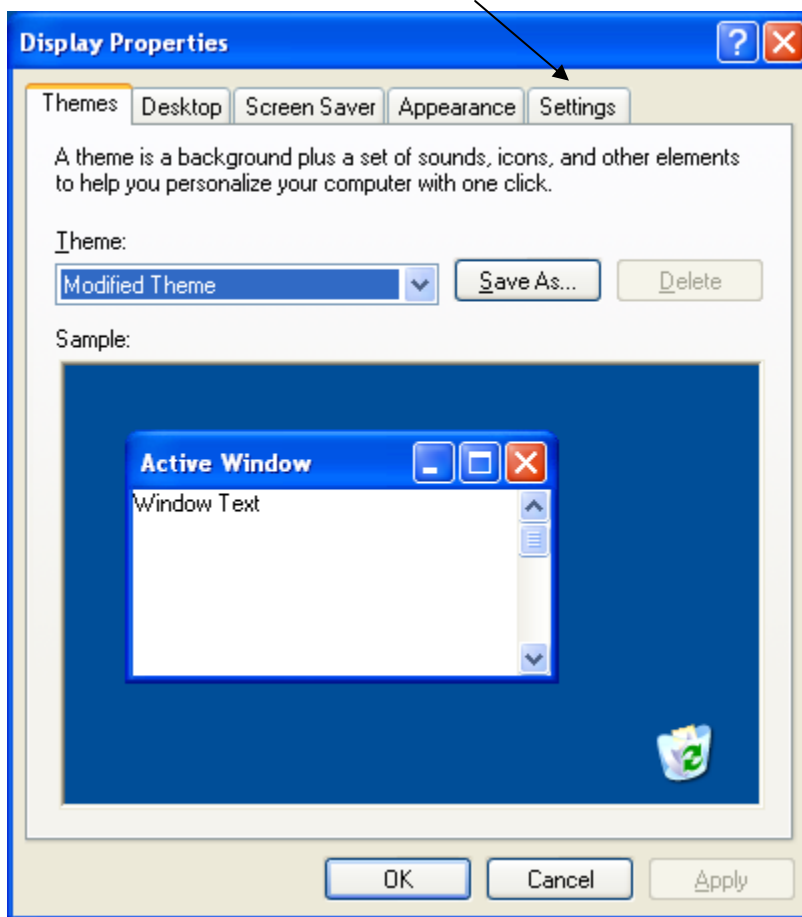
**Step 1:** From your desktop **Right Click anywhere in the empty space.**



## Step 2: Left Click on "Properties".

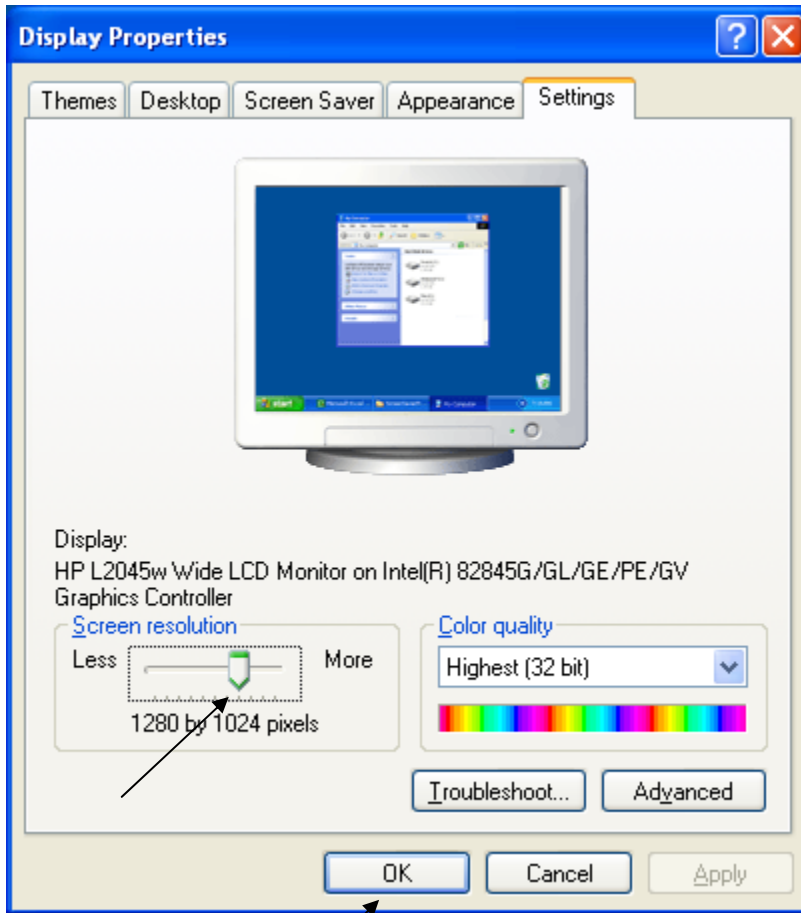


Step 3: **Left Click on the “Settings” tab.**



Step 4: **Left Click** on the **slider button** located at the bottom left of the screen under **“Screen Resolution.”**

Slide the button to the right until your reach a higher number combination than your current resolution settings. Experiment with the sizes as it will vary depending on the size of your monitor and your personal preferences. The higher the resolution, the more content per screen. (Note that this will also make your icons and fonts on your desktop smaller as well.)



**TIP!** Before you use the slider button, write down your current resolution setting!

Step 5: **Click OK.**

Preview your new settings in the StudentMAX™ placement grid as well as other applications such as WORD. Since you can alter your settings at any time you may find that the higher resolution works great in StudentMAX™, but you may prefer a larger font if you're working in WORD. It's simply personal preference so adjust your settings accordingly.

We hope you found this information helpful. If you need further assistance, please contact Sandy Anderson at [sandy.anderson@chanet.org](mailto:sandy.anderson@chanet.org) or 216.255.3651. Thank you for your participation in StudentMAX™!